

Cast iron flanged elbow with stand Type N

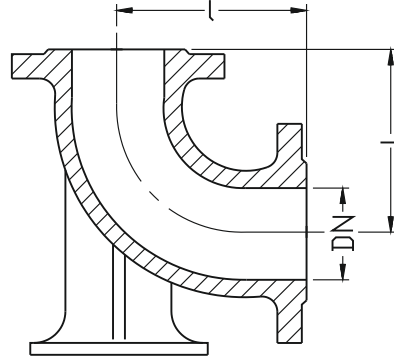
PN10
PN16

SEWAGE

WATER



Cast iron elbow N 9202



DN	I	Weight
	[mm]	[kg]
80	165	13
100	180	17
150	220	29
200	260	46
250	350	73
300	400	104
400	500	177
500	600	281
600	700	425
800	900	860

Product description (standard execution):

- Made of ductile cast iron EN-GJS 500-7
- UV resistant epoxy coating, minimum 250 microns according to EN ISO 12944-5
- Flange connection according to EN 1092-2 (DIN 2501), pressure PN10, PN16
- Product according to EN 545
- Hygienic certificate PZH for potable water
- Working pressure PN10 / PN16

Application:

In water supply systems, potable water and other chemically inert liquids as well as raw or industrial sewage

Flanged cross Type TT

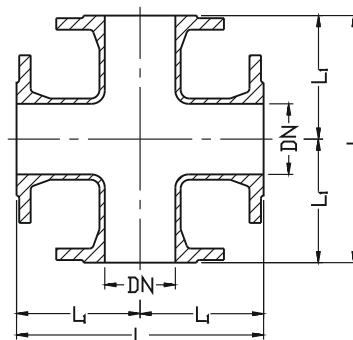
PN10
PN16

SEWAGE

WATER



Flanged cross type CF 9218



DN	L	L ₁	Weight
	[mm]		[kg]
80	330	165	22
100	360	180	27
150	440	220	50
200	520	260	80
250	700	350	104
300	800	400	145
400	900	450	215
500	1000	500	305
600	1100	550	420

Product description (standard execution):

- Made of ductile cast iron EN-GJS 500-7
- UV resistant epoxy coating, minimum 250 microns according to EN ISO 12944-5
- Flange connection according to EN 1092-2 (DIN 2501), pressure PN10, PN16
- Product according to EN 545
- Hygienic certificate PZH for potable water
- Working pressure PN10 / PN16

Application:

In water supply systems, potable water and other chemically inert liquids as well as raw or industrial sewage

We reserve the rights to modify the production program and the given data without separate notices due to the permanent company development